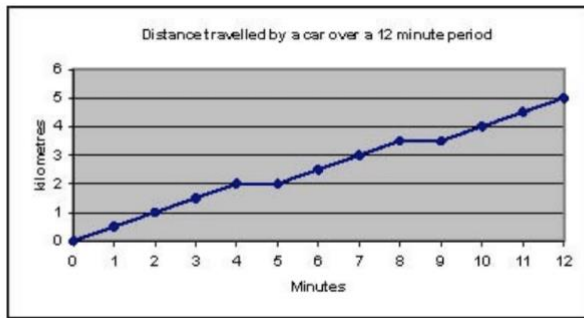


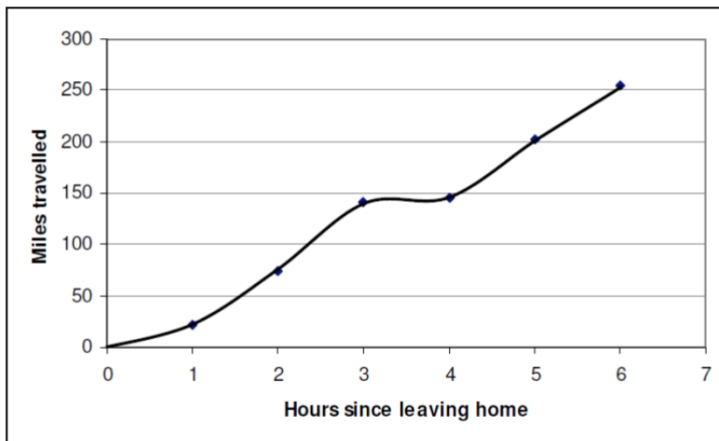
## Handling Data – Line Graphs

The diagram below shows the distance covered by a car over a 12 minute period by a driver going to work.



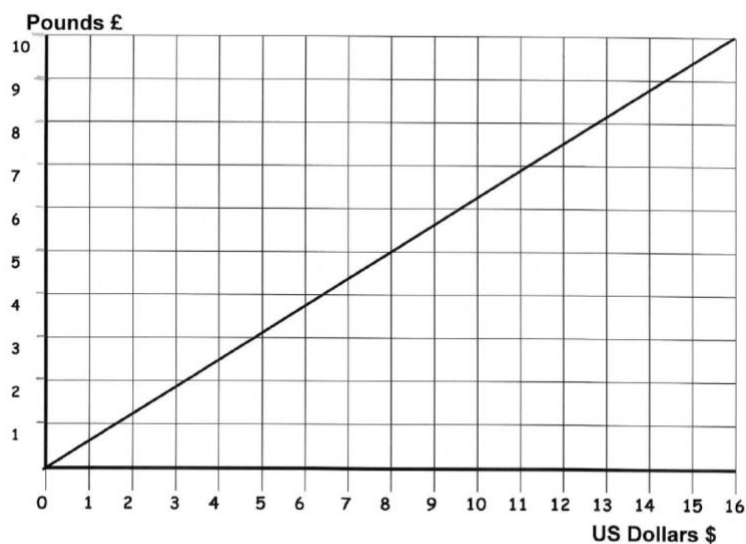
- c) What is the car's average speed, in kilometres per hour, over the first 4 minutes?

Philip leaves home to drive to his parents house. The number of miles he drives over the given time since leaving home is shown in the diagram below:



- (a) How far, approximately, does he travel in the first two hours of his journey?  
 (b) If he leaves home at 10 a.m. at what time, approximately, did he stop for lunch?  
 (c) What is his average speed, in miles per hour, for the whole journey?

Here is a graph for converting British pounds sterling to and from US dollars.

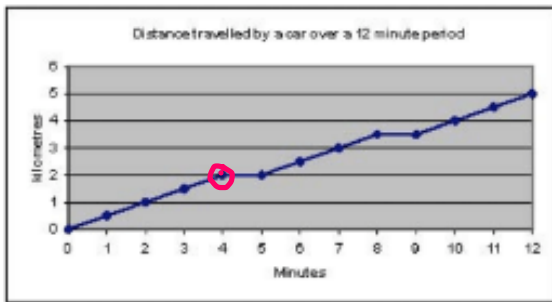


Katy went Christmas shopping in New York.

- b) She took £500 to spend. How much was this in US dollars?

Answers

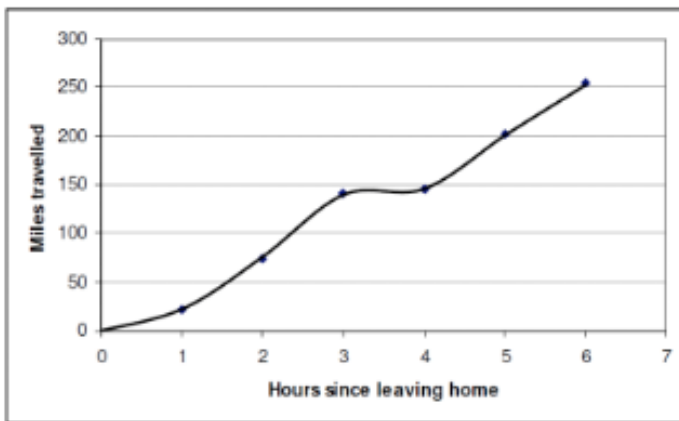
The diagram below shows the distance covered by a car over a 12 minute period by a driver going to work.



2 km : 4 mins  
 . ∴ 0.5 km  
 } 30 km/hr

c) What is the car's average speed, in kilometres per hour, over the first 4 minutes?

Philip leaves home to drive to his parents house. The number of miles he drives over the given time since leaving home is shown in the diagram below:



- (a) How far, approximately, does he travel in the first two hours of his journey? 75 miles
- (b) If he leaves home at 10 a.m. at what time, approximately, did he stop for lunch? 1 pm
- (c) What is his average speed, in miles per hour, for the whole journey? 250 : 6

Here is a graph for converting British pounds sterling to and from US dollars.

Katy went Christmas shopping in New York.

b) She took £500 to spend. How much was this in US dollars?

$$\begin{array}{r} 041.6 \\ 6 \overline{) 2510.40} \end{array}$$
  

$$\begin{array}{r} £10 : 16 \$ \\ + 50 \quad \times 50 \\ \hline 500 \end{array}$$
800